



The AI-First Advantage: How Netsmartz Helps Businesses Win with AI

Netsmartz is leading the **AI revolution** by **embedding intelligence** into every layer of business. Discover how our **AI-first approach empowers organizations to innovate, scale, and thrive.**

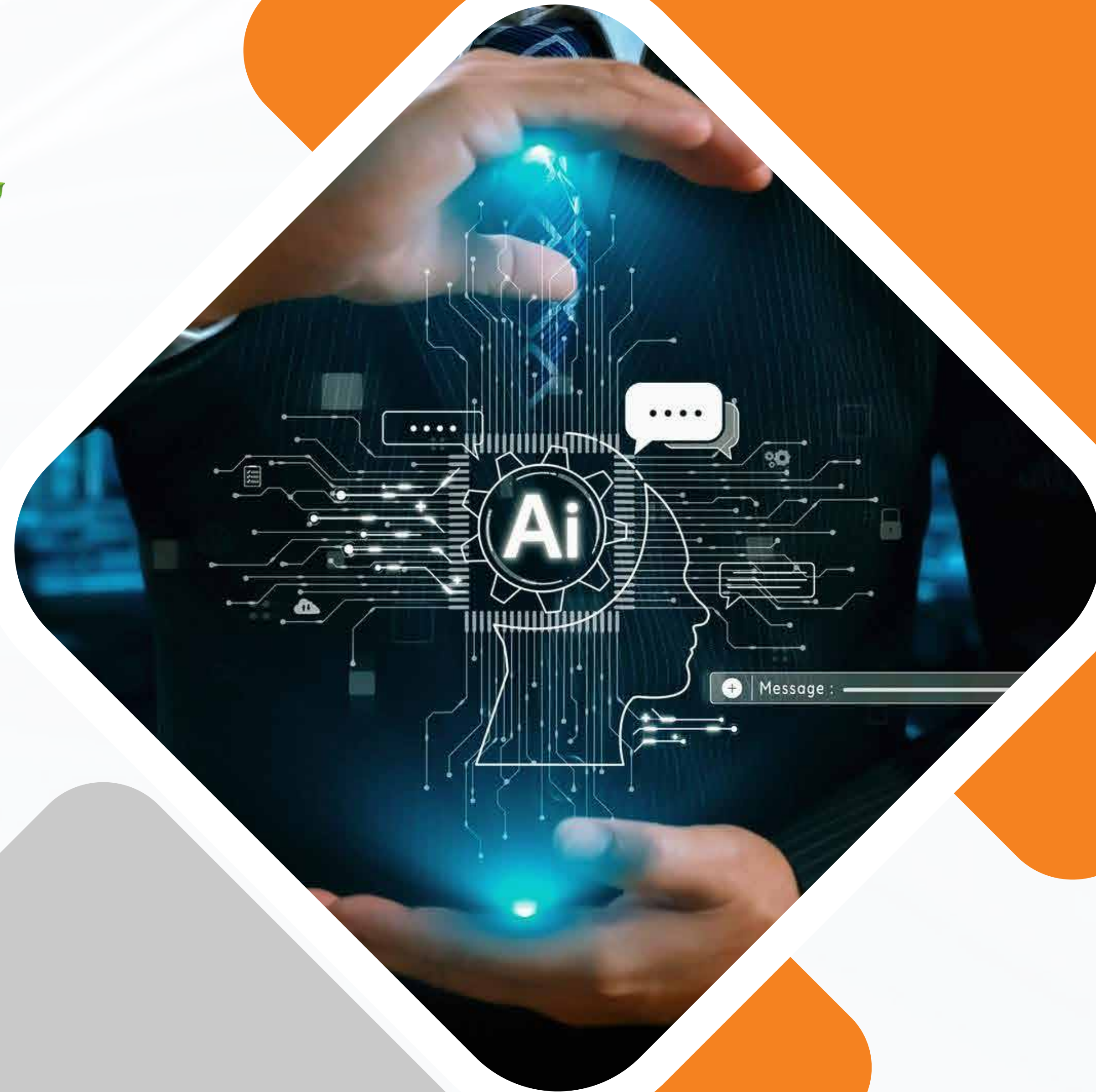


Table of Contents



- | | | | |
|----|--|----|---|
| 01 | From Buzzword to Baseline: Why AI-First is the New Standard | 08 | AI in Action: Department-Level Use Cases |
| 02 | Why AI Matters Today | 09 | Automation to Agentic AI: The Next Leap |
| 03 | Uncovering the AI-First Philosophy | 10 | Responsible AI at Netsmartz |
| 04 | Building an AI-Ready Culture | 11 | Governance & Compliance: Doing AI Right |
| 05 | The Data Foundation: Powering AI with DataSmartz | 12 | Your AI-First Roadmap: From Assessment to Scale |
| 06 | AI & Cybersecurity: Safeguarding the Intelligent Enterprise | 13 | A Quick Glance at Netsmartz's Future Outlook |
| 07 | Our AI-First Journey: From Pilots to Enterprise Transformation | 14 | Why Netsmartz About Netsmartz |

From Buzzword to Baseline: Why AI-First is the New Standard

Artificial Intelligence (AI) has rapidly evolved from a futuristic concept into the defining driver of competitive advantage. Businesses across industries, from SaaS to healthcare to manufacturing, are using AI not just to **automate tasks**, but to **redesign operations**, **reimagine customer experiences**, and **unlock entirely** new revenue streams.

At Netsmartz, we recognized this inflection point early and took bold steps to **embed AI across every function in our organization**. Today, **we are proud to call ourselves an AI-first company**, an organization **where AI isn't just a tool**, but a core philosophy guiding strategy, culture, and innovation.

The results speak for themselves:



90%+ of our workforce is Gen AI certified



200+ SaaS AI use cases delivered



25% efficiency gains, 15% revenue uplift across operations

This whitepaper shares our journey: why AI matters now, how we embedded it across our enterprise, and how we can help you transform into an AI-first enterprise.

The future is autonomous, and it starts with an AI-first mindset.



Why AI Matters Today

AI is not just another technology wave; it's the backbone of digital competitiveness in the 2020s and beyond.

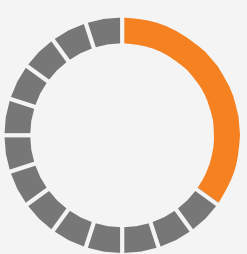
- » **Global AI adoption:** According to Pega's 2024 AI survey, 77% of organizations are already experimenting with AI, and 34% are using it at scale.
- » **Market growth:** McKinsey estimates that AI could add \$13 trillion to the global economy by 2030, boosting global GDP by 1.2% annually.
- » **Efficiency gains:** A 2023 PwC report highlights that AI-driven automation can deliver 30–40% efficiency improvements in knowledge-based tasks.

The business impact of AI manifests across three key dimensions:

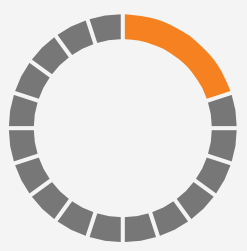
- » **Efficiency:** Automating repetitive processes, streamlining workflows, and reducing costs.
- » **Innovation:** Accelerating R&D, enabling personalization at scale, and opening new product categories.
- » **Customer Experience:** Driving proactive, predictive, and hyper-personalized engagement.

Crucially, the conversation is **shifting from automation (machines doing tasks) to autonomy (machines making intelligent decisions)**. Organizations that embrace this shift early will **define industry leadership in the coming decade**.

Why AI, Why Now?



Efficiency 41%



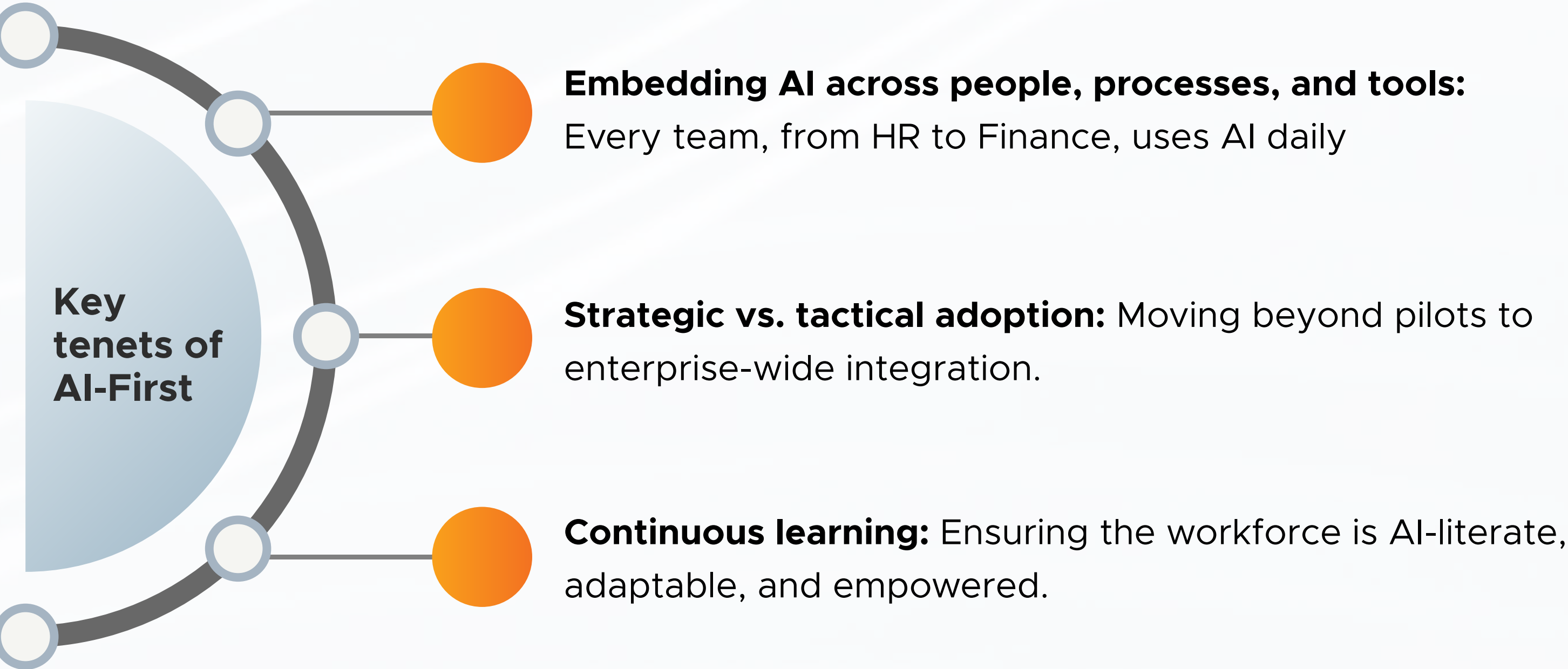
Innovation 19%



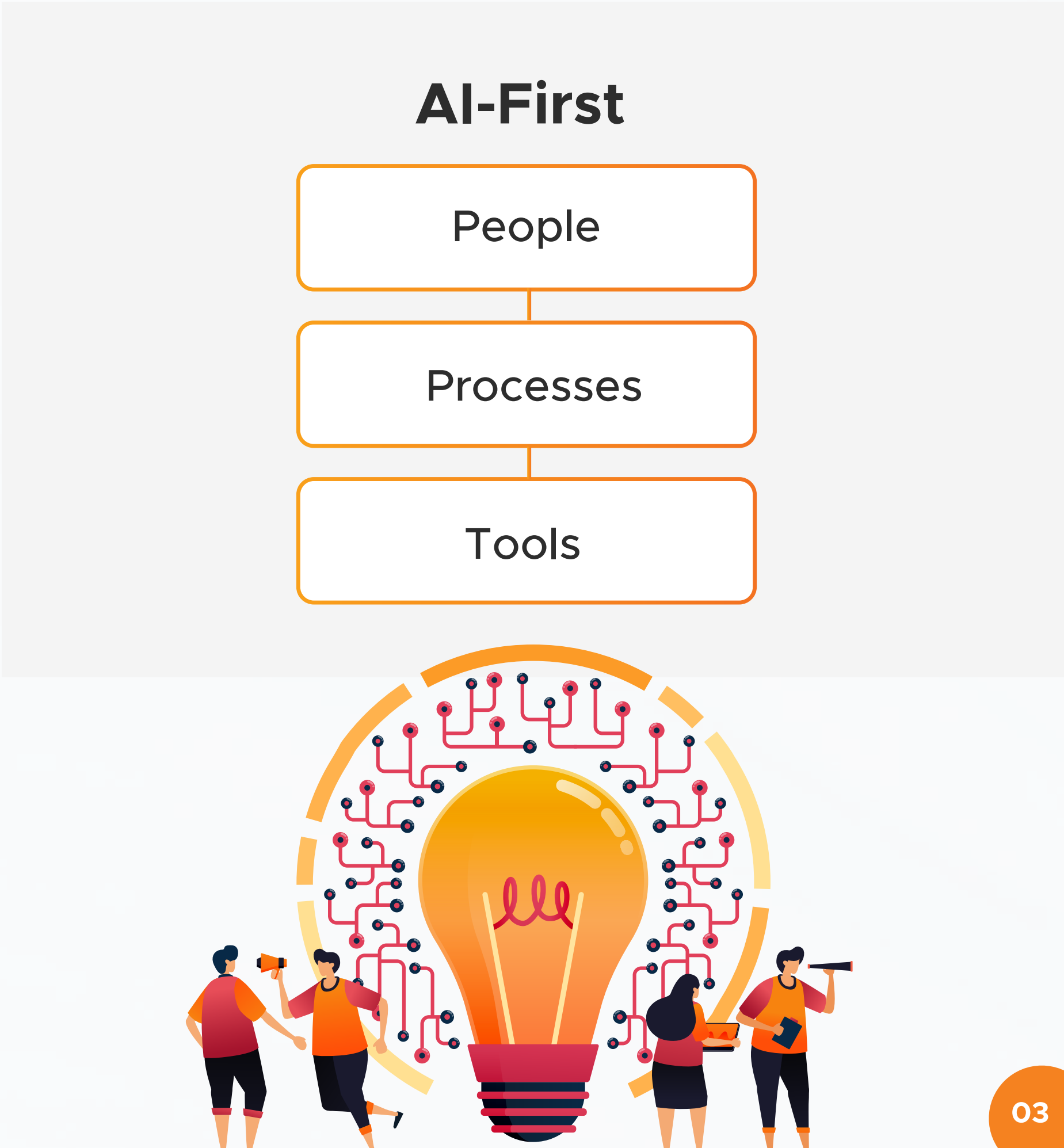
Customer Experience 18%

Uncovering the AI-First Philosophy

At Netsmartz, we define **AI-first** as a strategic orientation where **AI** is integrated into every dimension of the business, not as an afterthought, but as a core design principle.



This philosophy has become our blueprint for transformation and the foundation we bring to our client engagements.



Building an AI-Ready Culture

Transformation begins with the right culture. At Netsmartz, AI readiness isn't a slogan; it's anchored in three pillars: People, Processes, and Tools. Together, they create the ecosystem where AI thrives.



People: Empowered and AI-Literate Teams

Executive ownership matters:
AI won't drive itself. Leaders actively steer the vision and model it in day-to-day decisions.

Educated workforce:
Every employee, from the C-suite to the frontline, is given the skills and confidence to use AI in their workflows.



Process: Intelligent Workflows, Not Just Automation

Embedded AI into Operations:
Processes are reimagined with AI at their core, not bolted on.

From Routine to Strategic:
AI automates repetitive tasks, freeing people to focus on creativity, empathy, and innovation.



Tools: Strategic, Purpose-Built AI Infrastructure

Move beyond ad-hoc tool experimentation to deploying specialized AI tools aligned with business needs.

Build a robust data and tech foundation with unified data architecture, scalable infrastructure, and modern platforms enabling real-time AI effectiveness.



The Data Foundation: Powering AI with DataSmartz

There’s no AI without data and no meaningful AI outcomes without **reliable, governed, and connected data**. At Netsmartz, we recognize that data is the fuel of the AI engine. That’s why our data subsidiary, **DataSmartz**, plays a pivotal role in building the foundation for every AI-first initiative.

AI readiness begins with data readiness — unifying silos, modernizing warehouses, and enabling real-time insights that feed intelligent decision-making.

Our Data-to-AI Framework:

» **Modern Data Architecture:**

Fabric, Azure, and Power BI-based ecosystems that connect fragmented enterprise data.

» **Data Governance & Quality:**

Ensuring clean, consistent, and compliant data pipelines for trustworthy AI models.

» **AI-Ready Infrastructure:**

Seamless integration between data layers and AI layers for analytics, automation, and prediction.

» **Unified View:**

Turning data chaos into actionable intelligence — empowering every team with accessible, governed insights.



Data-to-AI Lifecycle



AI & Cybersecurity: Safeguarding the Intelligent Enterprise

As organizations embrace AI, their threat surface expands. From model poisoning to adversarial attacks, securing AI systems is no longer optional — it's foundational.

At Netsmartz, we integrate AI not only as an enabler of innovation but also as a defender of trust.

AI for Cyber Defense:

» Anomaly Detection:

AI models monitor network behavior to flag potential intrusions before they escalate.

» Predictive Threat Intelligence:

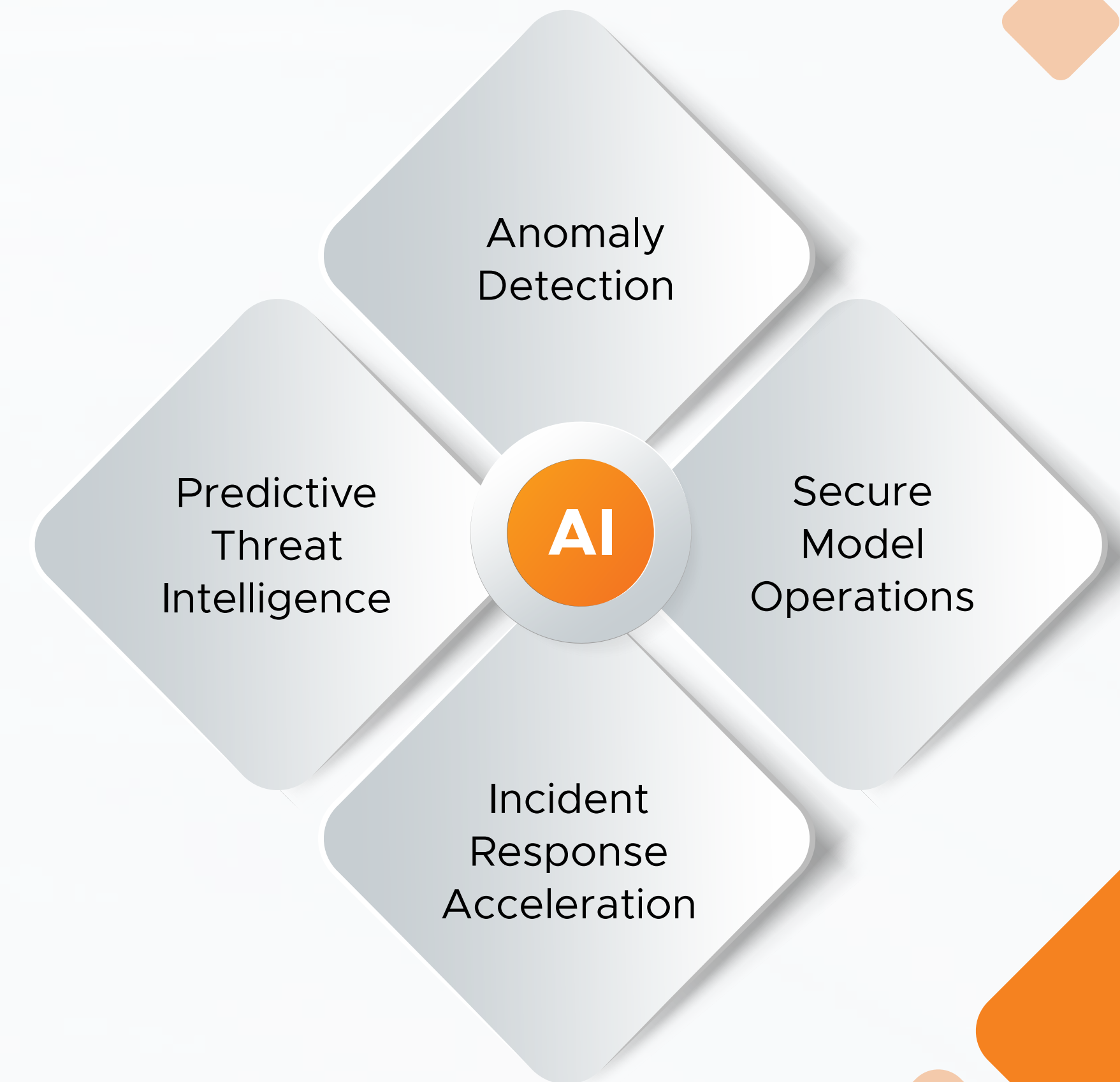
Machine learning predicts and prevents cyberattacks through pattern recognition and risk modeling.

» Incident Response Acceleration:

Generative AI assists analysts with context-aware responses and threat containment.

» Secure Model Operations (MLOps):

Every deployed model is monitored for drift, bias, and malicious exploitation.

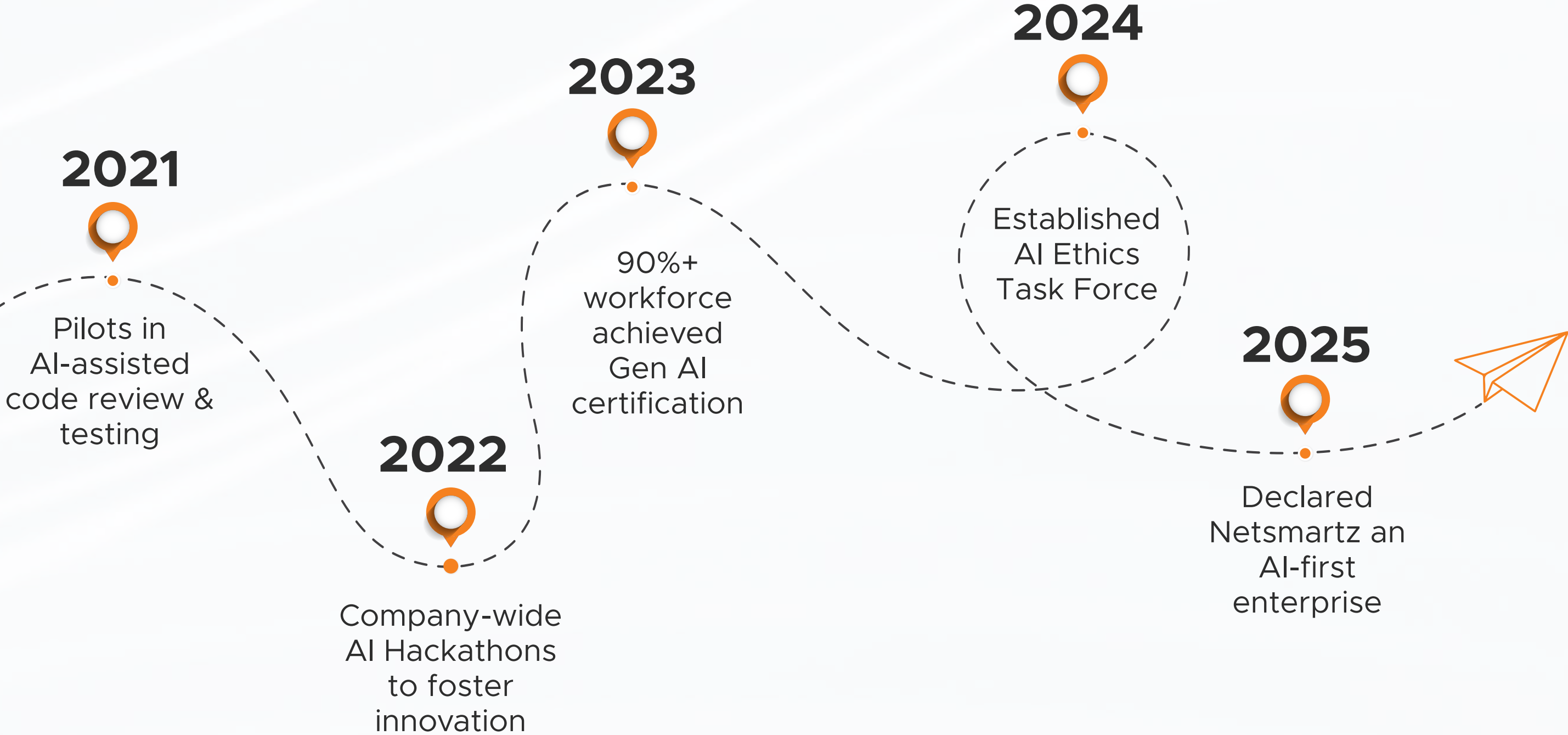


Our Cyber-AI Promise:

We ensure every AI-first initiative is secure by design, resilient by default, and compliant by regulation.

Our AI-First Journey: From Pilots to Enterprise Transformation

Our journey has been deliberate, cultural, and systemic.



By combining education, experimentation, and governance, we ensured AI adoption wasn't a one-off project, but a transformation of identity.



Looking forward to contributing to AI-driven projects, and I feel fully equipped to share the future of technology.

Sanjana Sao, Software Engineer at Netsmartz



AI in Action: Department-Level Use Cases

AI powers outcomes across every function at Netsmartz:



HR

Predictive attrition analysis & AI-powered hiring reduced recruitment cycles by 30%.



Sales & Marketing

Lead scoring + personalized campaigns increased conversion rates by double digits.



Customer Success

Churn prediction models flagged at-risk customers weeks earlier, enabling proactive retention.



Engineering

AI-assisted code reviews + bug triage reduced resolution time by 25%.



Finance

AI-driven forecasting improved cash-flow accuracy and prevented fraud anomalies.

Together, these use cases form a 360° intelligent enterprise, where every decision is data-driven, predictive, and smarter.

Automation to Agentic AI: The Next Leap

From automation to autonomy, AI is no longer just executing tasks; it's making decisions.

Netsmartz is pioneering Agentic AI—autonomous agents that learn, adapt, and act across business workflows. These agents go beyond RPA and traditional automation:



Self-Optimizing Agents:

Continuously improve processes based on outcomes.



Multi-Agent Collaboration:

Agents coordinate across departments for end-to-end automation.



Human-in-the-Loop Design:

Ensures oversight and ethical boundaries.



Use Cases:

Autonomous customer support, intelligent procurement, adaptive scheduling.



AI's next phase should revolve around scaling proven use cases to generate real business outcomes rather than merely piloting projects.

Arvind Krishna (Chairman and CEO, IBM)



Responsible AI at Netsmartz

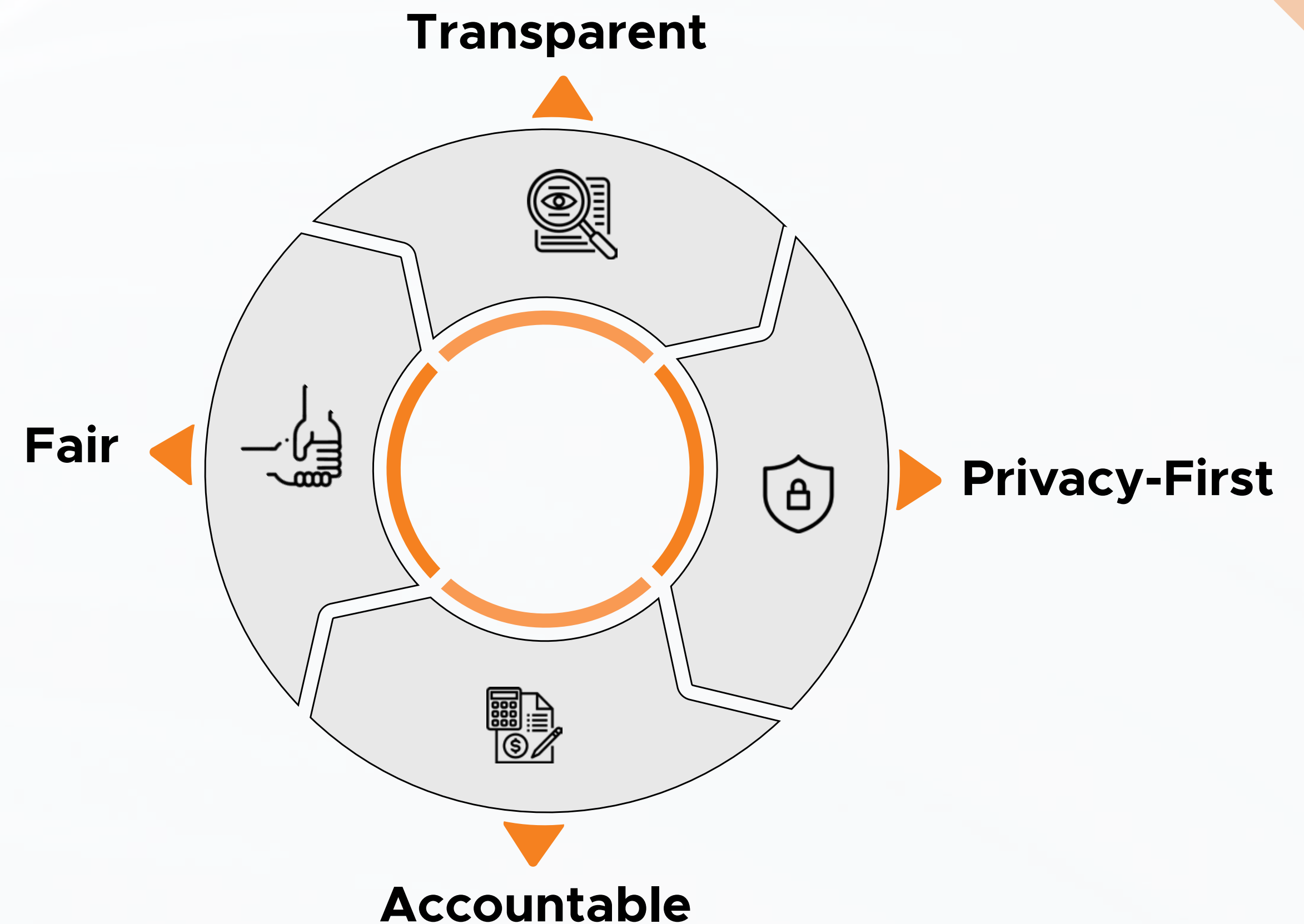
Trust is the foundation of AI adoption.

Netsmartz has an AI Ethics Task Force dedicated to ensuring all AI is:

- » **Fair:** Bias-detection frameworks.
- » **Transparent:** Explainable models for end-users.
- » **Privacy-first:** Data protection by design
- » **Accountable:** Human oversight in critical workflows.

This addresses a key global concern -

51% of leaders cite bias & transparency as their top worry with AI



Governance & Compliance: Doing AI Right

AI without governance is a risk. AI with governance is resilience.

Beyond ethics, we ensure our AI systems meet the highest standards of legal, regulatory, and operational compliance.



Regulatory Alignment

GDPR, HIPAA,
SOC 2, ISO
27001



AI Risk Assessments

Evaluating model
behavior, drift, and
impact



Responsible AI Registry

Tracking model
versions, decisions,
and updates



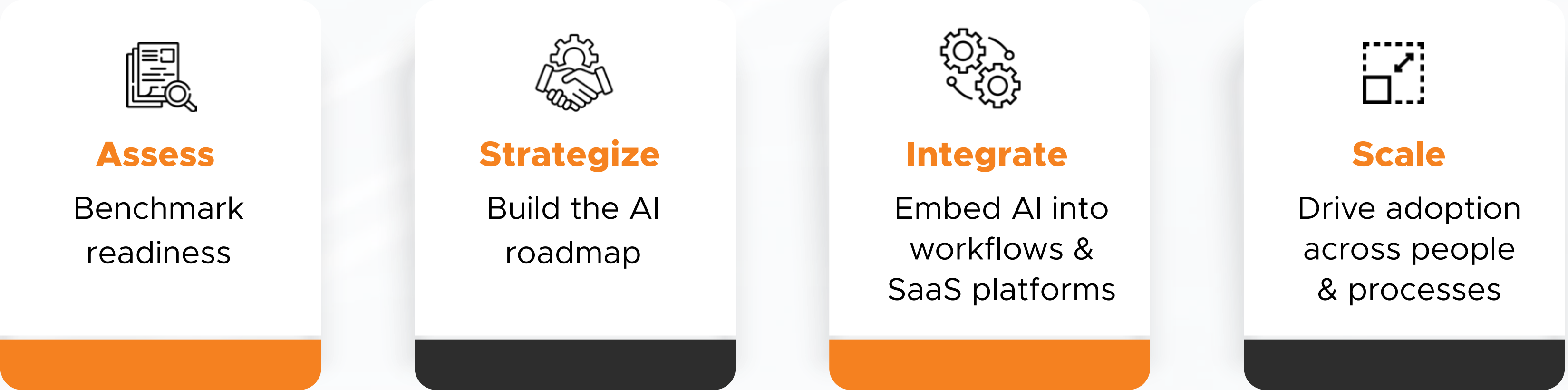
Audit-Ready Documentation

Ensuring
traceability and
accountability

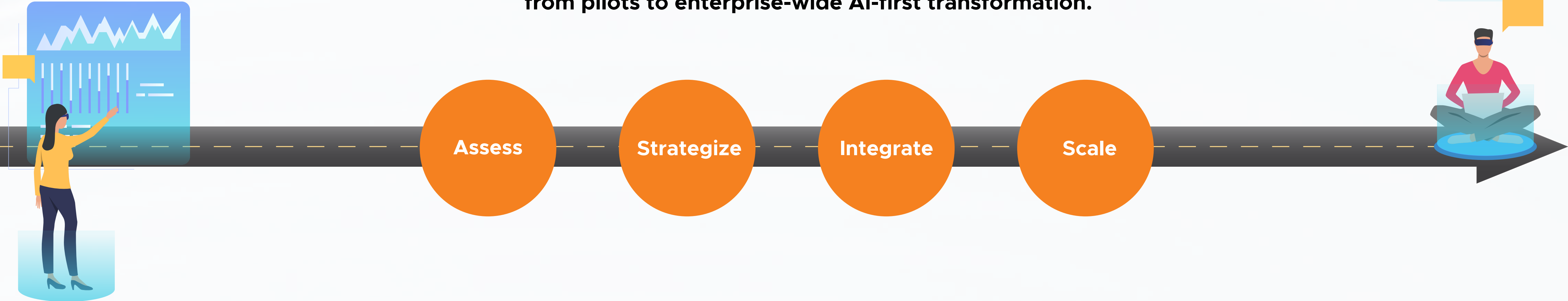


Your AI-First Roadmap: From Assessment to Scale

Our AI-First blueprint:



With dedicated AI teams, consultants, and engineers, Netsmartz helps enterprises go from pilots to enterprise-wide AI-first transformation.



A Quick Glance at Netsmartz's Future Outlook

AI will only accelerate in the times to come, and we at Netsmartz are not the ones to lag! In 2025 and beyond, we are focusing on:



Agentic AI

Autonomous agents driving business workflows



Multimodal Systems

Combining text, vision, and voice AI



AI Partnerships

Expanding with cloud + AI providers



Annual AI Reports (2025)

Tracking trends and benchmarks



The question for you isn't if you'll adopt AI-first, but when.

Why Netsmartz: Your AI-First Partner in Transformation



AI-first organization
with innovation at
core



200+ experts in
our AI center of
excellence



40+ AI-driven
tech stack



10+ AI-powered
SaaS products

About Netsmartz

Netsmartz is a US-based digital engineering company delivering software development, AI & Data, Cloud & Cybersecurity, as well as QA & Testing services, for SaaS businesses, SMBs, and Fortune 500s. With 1,500+ technologists across 12 worldwide campuses, we accelerate innovation through agile squads & outcome-based projects. Netsmartz holds strategic partnerships as an SI with Microsoft, IBM, Salesforce, ServiceNow & Adobe.



NORTH AMERICA	EUROPE	ASIA	AUSTRALIA
Rochester, Miami, Austin Toronto, Waterloo, Vancouver	London	Dubai Gurugram, Noida, Chandigarh Singapore, Mohali, Pune	Melbourne Sydney

26+

Years in
Excellence

2000+

Projects
Completed

1500+

Team
Members

10+

Global
Locations

Let's connect!



www.netsmartz.com



sales@netsmartz.com



1-888-661-8967

© Netsmartz, LLC All Rights Reserved.